



# Connecticut

## Lis Penden and Foreclosure Deed Filings

### January to December, 2015

---

#### **Lis Penden Filings:**

Indicates a pending legal action against a property owner. It is NOT a guarantee of pre-foreclosure activity.

#### **Foreclosure Deed Filings:**

These deeds transfer the title to the lender after the mortgage is foreclosed. The Warren Group<sup>®</sup> captures two types of foreclosures deeds—Strict Foreclosures and Committee Deeds.

Source: Warren Group<sup>®</sup>

While every effort is made to ensure accuracy, the CHFA makes no claim that the data presented herein is 100% faultless and is provided for informational purposes only. The information displayed is not an all-inclusive list as the CHFA reports only on populated records that are mortgage related. Personal filings against a homeowner are not captured in data herein.

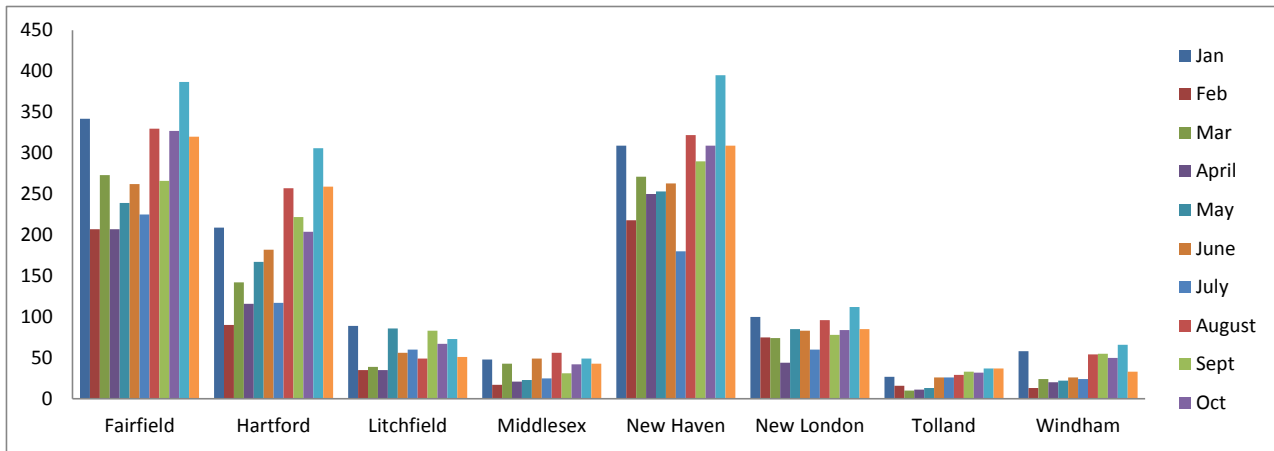


Easton	3	1	1	1	3	4	1	4	4	2	0	2	26
Ellington	4	0	2	2	1	3	2	3	12	1	3	5	38
Enfield	11	6	7	10	15	14	3	9	6	10	24	11	126
Essex	1	0	1	1	0	0	1	2	1	1	3	3	14
Fairfield	17	8	5	6	7	9	4	13	13	12	14	7	115
Farmington	2	2	2	1	7	5	1	4	4	4	7	6	45
Franklin	0	2	0	0	1	1	1	2	0	1	1	0	9
Glastonbury	7	3	5	5	5	5	2	5	4	4	8	6	59
Goshen	0	0	0	0	1	1	0	0	3	2	1	0	8
Granby	0	1	0	1	1	0	2	1	1	4	2	1	14
Greenwich	5	1	3	4	2	4	3	6	7	13	7	9	64
Griswold	0	10	4	2	4	4	4	1	9	4	4	8	54
Groton	8	3	7	2	5	5	2	5	8	7	9	7	68
Guilford	11	5	1	2	4	3	3	5	6	8	5	6	59
Haddam	1	0	0	0	0	1	0	10	2	2	0	8	24
Hamden	30	13	15	14	13	14	7	14	16	29	32	18	215
Hampton	1	0	1	0	0	1	0	1	1	1	1	0	7
Hartford	34	8	22	18	27	25	14	26	25	30	62	51	342
Hartland	2	1	0	0	0	1	0	0	1	0	0	1	6
Harwinton	2	1	1	1	0	2	0	0	0	1	1	1	10
Hebron	1	1	1	1	1	2	3	2	2	1	2	3	20
Kent	0	0	0	0	0	1	1	0	2	1	1	0	6
Killingly	3	3	2	2	3	4	5	9	7	7	11	5	61
Killingworth	4	0	0	1	1	3	7	4	5	3	0	2	30
Lebanon	2	1	0	3	3	4	3	1	2	2	2	2	25
Ledyard	18	6	9	6	11	10	8	7	5	7	5	7	99
Lisbon	2	0	0	0	5	2	2	2	1	1	6	4	25
Litchfield	1	4	1	0	2	3	3	2	4	0	1	0	21
Lyme	0	1	0	0	1	0	1	2	0	2	0	1	8
Madison	8	2	2	1	4	5	0	7	7	5	2	2	45
Manchester	17	6	11	8	4	12	8	15	23	15	27	12	158
Mansfield	1	0	2	1	1	0	1	3	2	6	0	2	19
Marlborough	4	0	0	1	2	0	2	0	1	0	1	1	12
Meriden	39	10	16	22	30	33	14	20	23	41	35	32	315
Middlebury	3	0	3	1	1	1	0	3	2	2	3	1	20
Middlefield	1	1	1	0	0	1	0	1	0	1	2	1	9
Middletown	15	10	28	5	13	26	3	14	9	13	16	15	167
Milford	13	7	9	10	6	15	15	7	4	12	24	11	133
Monroe	8	4	6	7	7	2	3	7	5	9	9	4	71
Montville	6	1	6	4	6	3	4	10	9	7	9	5	70
Morris	0	0	0	0	2	0	0	1	0	0	2	1	6
Naugatuck	19	6	4	3	7	6	4	20	11	9	17	8	114
New Britain	16	7	9	10	19	19	6	53	18	15	19	24	215
New Canaan	2	0	0	0	0	3	2	1	4	2	4	0	18
New Fairfield	2	2	4	1	1	4	3	4	5	5	2	7	40
New Hartford	2	2	0	1	0	0	4	0	2	1	1	0	13
New Haven	65	17	71	90	38	37	47	46	48	39	51	57	606
New London	18	12	7	8	11	14	4	11	8	9	17	5	124
New Milford	3	2	4	4	4	2	3	2	3	12	12	7	58

Newington	3	0	1	2	3	2	1	2	3	5	7	10	39
Newtown	3	5	1	1	5	2	4	0	4	6	4	6	41
Norfolk	1	0	1	1	0	0	0	0	0	0	0	0	3
North Branford	5	0	2	0	3	3	2	8	2	4	8	4	41
North Canaan	3	1	0	2	0	0	3	1	1	1	0	1	13
North Haven	8	0	3	10	11	9	2	5	5	4	16	5	78
North Stonington	4	3	2	0	0	1	3	5	0	0	5	5	28
Norwalk	36	10	19	20	18	24	14	16	22	17	29	25	250
Norwich	16	18	12	7	15	17	8	23	18	16	21	14	185
Old Lyme	3	1	0	1	3	2	1	1	2	5	2	2	23
Old Saybrook	2	2	2	2	2	2	0	1	2	2	4	1	22
Orange	1	3	4	4	4	3	3	7	3	6	3	3	44
Oxford	1	2	2	2	4	2	0	2	4	3	0	2	24
Plainfield	12	2	3	2	5	3	3	4	8	12	9	7	70
Plainville	0	3	8	3	3	2	7	4	6	7	8	5	56
Plymouth	12	1	8	5	49	10	26	10	30	8	13	7	179
Pomfret	1	1	1	1	0	1	1	2	0	2	0	0	10
Portland	0	0	0	0	1	0	0	3	1	2	2	0	9
Preston	3	2	3	0	3	1	0	4	0	2	3	1	22
Prospect	4	2	2	1	1	2	2	1	3	2	1	2	23
Putnam	6	1	3	3	1	3	1	2	10	3	7	4	44
Redding	1	2	1	1	0	4	1	1	1	0	6	2	20
Ridgefield	2	2	4	2	2	3	4	5	4	3	4	3	38
Rocky Hill	7	0	0	1	0	0	4	0	1	3	10	2	28
Roxbury	3	1	0	0	1	0	0	1	0	0	1	1	8
Salem	4	7	5	0	1	3	0	2	3	1	3	0	29
Salisbury	0	0	0	0	0	0	0	0	2	0	0	1	3
Scotland	3	0	1	0	0	1	2	0	1	3	1	1	13
Seymour	13	2	6	1	8	4	5	5	9	8	3	6	70
Sharon	0	0	1	0	0	3	0	1	0	0	0	1	6
Shelton	10	13	14	4	8	13	10	16	7	12	15	11	133
Sherman	0	0	0	0	0	0	0	0	1	1	1	1	4
Simsbury	4	3	2	1	10	2	3	6	6	2	3	4	46
Somers	2	1	0	1	0	3	1	0	0	1	2	1	12
South Windsor	3	2	6	2	8	4	7	3	8	2	10	8	63
Southbury	2	4	3	2	7	15	2	4	7	7	9	7	69
Southington	9	2	6	5	5	9	8	9	3	7	9	3	75
Sprague	0	1	1	1	2	0	2	4	0	1	3	0	15
Stafford	3	5	0	0	0	0	2	1	0	7	5	3	26
Stamford	28	12	16	20	22	30	19	28	21	26	25	29	276
Sterling	4	0	4	2	0	3	2	4	0	0	7	1	27
Stonington	0	0	2	2	0	2	0	1	0	4	2	4	17
Stratford	22	15	12	12	13	13	17	16	25	17	36	26	224
Suffield	3	2	2	2	3	2	1	2	2	1	3	6	29
Thomaston	2	5	3	3	1	2	2	6	1	1	5	1	32
Thompson	2	1	1	1	3	3	2	5	7	4	4	0	33
Tolland	2	3	0	1	2	1	1	2	2	0	3	0	17
Torrington	38	10	14	9	10	19	10	8	16	15	14	9	172
Trumbull	16	12	16	2	14	14	8	8	14	10	14	7	135

Union	0	0	0	0	0	0	0	0	0	0	0	0	0
Vernon	8	4	2	2	7	12	4	8	7	8	9	11	82
Voluntown	4	0	3	0	0	2	1	1	2	4	1	1	19
Wallingford	4	18	13	7	12	14	10	18	13	14	12	15	150
Warren	1	0	1	1	1	1	1	0	1	1	1	1	10
Washington	3	0	0	0	1	1	1	1	1	1	2	2	13
Waterbury	18	24	25	33	37	27	17	70	46	42	53	58	450
Waterford	9	5	6	4	8	8	2	3	8	3	8	8	72
Watertown	8	4	2	4	7	5	2	7	10	15	7	6	77
West Hartford	12	4	6	4	5	5	6	11	6	3	14	7	83
West Haven	10	33	26	9	22	20	18	26	27	33	40	20	284
Westbrook	5	0	3	2	0	2	1	2	0	2	1	0	18
Weston	3	2	0	3	2	1	1	4	2	3	2	7	30
Westport	4	0	1	3	5	3	4	0	9	6	5	6	46
Wethersfield	6	1	4	6	6	5	5	7	4	9	6	8	67
Willington	1	1	0	0	0	1	1	3	0	1	3	0	11
Wilton	5	2	0	3	0	4	0	6	3	2	4	3	32
Winchester	4	0	0	3	3	2	2	7	4	1	5	7	38
Windham	15	3	3	4	1	4	2	14	6	8	10	2	72
Windsor	9	2	2	9	5	5	9	15	14	12	12	6	100
Windsor Locks	8	3	5	0	0	5	0	7	6	2	6	5	47
Wolcott	6	3	3	0	2	6	1	5	8	3	13	6	56
Woodbridge	2	1	3	1	2	0	0	2	3	2	4	0	20
Woodbury	1	0	2	1	2	2	1	1	1	2	4	4	21
Woodstock	2	1	1	1	0	0	2	4	7	2	3	5	28
<b>YE Monthly Totals</b>	<b>1,182</b>	<b>671</b>	<b>876</b>	<b>704</b>	<b>888</b>	<b>947</b>	<b>717</b>	<b>1,193</b>	<b>1,058</b>	<b>1,115</b>	<b>1,425</b>	<b>1,137</b>	<b>11,913</b>

County	Jan	Feb	Mar	April	May	June	July	August	Sept	Oct	Nov	Dec	YE County Totals
Fairfield	342	207	273	207	239	262	225	330	266	327	387	320	3,385
Hartford	209	90	142	116	167	182	117	257	222	204	306	259	2,271
Litchfield	89	35	39	35	86	56	60	49	83	67	73	51	723
Middlesex	48	17	43	21	23	49	25	56	31	42	49	43	447
New Haven	309	218	271	250	253	263	180	322	290	309	395	309	3,369
New London	100	75	74	44	85	83	60	96	78	84	112	85	976
Tolland	27	16	10	11	13	26	26	29	33	32	37	37	297
Windham	58	13	24	20	22	26	24	54	55	50	66	33	445
<b>Monthly Totals</b>	<b>1,182</b>	<b>671</b>	<b>876</b>	<b>704</b>	<b>888</b>	<b>947</b>	<b>717</b>	<b>1,193</b>	<b>1,058</b>	<b>1,115</b>	<b>1,425</b>	<b>1,137</b>	<b>11,913</b>



This page intentionally left blank

Municipality	Month												YE Totals
	Jan	Feb	Mar	April	May	June	July	Aug	Sept	Oct	Nov	Dec	
Andover	2	1	0	0	0	0	0	0	0	0	0	0	3
Ansonia	5	5	4	9	5	2	4	5	1	3	1	1	45
Ashford	0	0	0	0	0	0	0	0	0	0	0	0	0
Avon	0	0	0	0	0	0	0	0	0	0	0	0	0
Barkhamsted	1	1	0	0	0	0	0	0	0	0	0	0	2
Beacon Falls	2	0	0	1	0	0	0	0	0	0	0	0	3
Berlin	1	0	5	0	3	3	1	0	0	1	0	1	15
Bethany	0	1	0	0	2	0	0	0	0	1	0	0	4
Bethel	13	10	22	6	10	4	1	1	0	3	3	1	74
Bethlehem	0	1	1	0	1	1	1	0	0	0	2	1	8
Bloomfield	4	6	5	4	5	4	0	0	2	2	1	1	34
Bolton	1	1	1	0	3	3	1	2	1	1	1	0	15
Bozrah	1	0	1	0	0	0	0	0	0	0	0	0	2
Branford	0	0	1	0	0	0	1	0	0	0	0	0	2
Bridgeport	27	56	59	40	25	18	1	2	4	5	5	4	246
Bridgewater	0	1	3	0	1	1	0	2	1	0	1	5	15
Bristol	3	2	13	11	7	3	0	0	0	0	0	0	39
Brookfield	16	9	17	6	0	11	2	6	9	4	9	3	92
Brooklyn	0	0	0	2	0	1	0	0	0	0	0	0	3
Burlington	1	0	2	0	0	0	0	0	0	0	0	0	3
Canaan	0	1	0	0	0	0	0	0	0	0	0	0	1
Canterbury	0	0	0	1	0	0	0	1	0	0	0	0	2
Canton	0	0	0	0	0	0	0	0	0	0	0	0	0
Chaplin	0	0	0	0	0	0	0	0	0	0	0	0	0
Cheshire	0	1	3	1	0	1	3	1	0	1	1	0	12
Chester	0	0	0	0	0	0	0	0	0	0	0	0	0
Clinton	0	0	0	0	0	0	0	0	0	0	0	0	0
Colchester	0	0	0	0	0	0	0	0	0	0	0	0	0
Colebrook	2	0	0	0	0	0	0	1	0	0	0	0	3
Columbia	0	3	0	1	1	0	2	0	1	2	2	0	12
Cornwall	1	0	0	0	0	0	0	0	0	0	0	0	1
Coventry	0	0	4	1	1	0	0	0	0	2	0	0	8
Cromwell	0	3	0	3	1	1	2	1	3	0	3	1	18
Danbury	4	5	12	9	6	7	5	7	2	6	4	1	68
Darien	0	0	1	0	1	0	1	0	0	0	0	0	3
Deep River	0	0	0	0	0	0	0	0	0	0	0	0	0
Derby	0	1	4	3	0	1	3	0	2	3	3	1	21
Durham	0	0	0	0	0	0	0	0	0	0	0	0	0
East Granby	0	0	0	0	0	0	0	0	0	0	0	0	0
East Haddam	2	2	5	0	0	0	0	1	0	0	0	0	10
East Hampton	0	0	0	0	0	0	0	0	0	0	0	0	0
East Hartford	25	16	24	11	19	26	18	27	10	18	27	19	240
East Haven	1	3	1	4	0	1	2	3	1	1	2	2	21



Municipality	Month												YE Totals
	Jan	Feb	Mar	April	May	June	July	Aug	Sept	Oct	Nov	Dec	
East Lyme	0	0	0	0	0	0	0	0	0	0	0	0	0
East Windsor	0	0	0	1	1	0	1	3	0	1	1	0	8
Eastford	1	0	0	0	3	0	2	1	0	0	1	0	8
Easton	2	2	5	0	3	1	0	2	0	0	0	4	19
Ellington	0	0	0	0	0	0	0	0	0	0	0	0	0
Enfield	1	14	7	10	8	4	5	5	3	2	10	2	71
Essex	0	0	0	0	0	0	0	0	0	0	0	0	0
Fairfield	1	4	6	3	0	2	2	5	1	0	1	2	27
Farmington	0	0	0	0	0	0	0	0	0	0	0	0	0
Franklin	1	0	0	0	0	0	0	0	0	0	0	0	1
Glastonbury	1	0	3	1	2	2	2	3	2	1	4	0	21
Goshen	0	0	0	0	0	1	1	1	1	0	0	0	4
Granby	0	2	1	1	0	0	0	0	0	0	0	0	4
Greenwich	0	0	0	0	0	0	0	0	0	1	0	0	1
Griswold	0	0	0	0	0	0	0	0	0	0	0	0	0
Groton	0	0	0	0	1	0	0	0	0	1	0	1	3
Guilford	6	4	3	4	3	0	0	0	0	3	0	0	23
Haddam	0	0	7	2	2	1	3	0	4	1	4	2	26
Hamden	3	2	10	10	3	3	5	11	5	3	8	3	66
Hampton	0	0	1	0	0	1	1	0	1	0	0	0	4
Hartford	23	15	50	18	30	6	2	3	3	11	3	4	168
Hartland	0	0	0	0	0	0	0	0	0	0	0	0	0
Harwinton	1	1	4	0	2	2	0	2	2	1	1	3	19
Hebron	0	2	1	0	3	0	2	1	0	1	3	0	13
Kent	0	0	0	0	0	0	0	0	0	0	0	0	0
Killingly	1	2	8	2	3	5	4	0	0	0	0	0	25
Killingworth	0	0	0	0	0	0	0	0	0	0	0	0	0
Lebanon	1	0	3	0	2	0	0	0	0	0	0	0	6
Ledyard	0	2	0	2	0	0	0	0	0	0	0	0	4
Lisbon	0	0	0	1	0	0	0	0	0	0	0	0	1
Litchfield	1	0	2	0	1	0	0	0	0	1	1	1	7
Lyme	0	0	0	0	0	0	0	0	0	0	0	0	0
Madison	8	18	33	4	0	0	0	0	0	0	0	0	63
Manchester	0	5	16	10	4	13	9	12	4	7	7	3	90
Mansfield	3	7	6	0	0	0	0	5	2	1	3	1	28
Marlborough	0	0	0	1	1	2	0	0	1	0	1	0	6
Meriden	4	8	24	11	12	7	8	2	0	2	1	4	83
Middlebury	1	1	1	0	0	0	0	2	0	1	0	2	8
Middlefield	1	3	0	0	0	0	0	0	0	0	0	0	4
Middletown	2	0	1	0	0	0	0	0	0	0	0	0	3
Milford	0	0	0	0	0	0	0	0	0	0	0	0	0
Monroe	0	1	3	2	0	0	0	0	0	0	0	0	6
Montville	0	0	0	0	0	0	0	0	0	0	0	0	0

Municipality	Month												YE Totals
	Jan	Feb	Mar	April	May	June	July	Aug	Sept	Oct	Nov	Dec	
Morris	0	0	0	0	0	0	0	0	0	0	0	0	0
Naugatuck	3	3	4	6	1	3	3	4	1	2	3	3	36
New Britain	11	17	26	13	7	5	2	0	3	3	2	3	92
New Canaan	1	1	3	1	1	0	1	0	0	0	1	1	10
New Fairfield	1	0	2	0	1	0	0	0	0	2	0	0	6
New Hartford	0	1	1	0	0	0	0	0	0	0	0	0	2
New Haven	9	24	40	25	14	23	138	40	11	8	28	12	372
New London	3	3	9	7	7	8	6	2	2	2	9	4	62
New Milford	0	0	0	0	0	0	0	0	0	0	0	0	0
Newington	0	0	0	0	0	0	0	0	0	0	0	0	0
Newtown	3	0	5	2	3	1	2	1	10	1	2	3	33
Norfolk	2	2	2	0	4	2	0	1	0	1	1	0	15
North Branford	0	0	0	0	0	0	0	0	0	0	0	0	0
North Canaan	0	2	2	0	0	1	0	2	2	1	2	0	12
North Haven	4	2	8	0	2	0	0	0	0	0	0	0	16
North Stonington	3	3	2	1	1	0	0	0	0	0	0	0	10
Norwalk	6	1	11	5	3	1	7	6	1	3	2	2	48
Norwich	0	11	8	11	2	5	5	7	1	3	1	5	59
Old Lyme	0	0	0	0	0	0	0	1	2	0	0	0	3
Old Saybrook	0	0	0	0	0	0	0	0	0	1	0	0	1
Orange	4	5	6	0	0	0	0	0	0	0	0	0	15
Oxford	0	0	0	0	0	0	0	0	0	0	0	0	0
Plainfield	2	3	4	6	3	4	4	2	3	2	7	1	41
Plainville	0	0	0	0	0	0	0	0	0	0	0	0	0
Plymouth	2	4	2	4	1	5	1	4	0	7	5	3	38
Pomfret	5	19	23	0	0	0	0	0	0	0	0	0	47
Portland	1	0	6	0	1	0	3	1	2	1	1	1	17
Preston	2	2	3	2	1	3	2	1	0	1	2	0	19
Prospect	2	1	3	0	2	3	0	0	1	1	1	0	14
Putnam	3	3	2	2	1	0	2	0	2	1	2	0	18
Redding	0	0	0	1	0	0	0	0	0	0	0	0	1
Ridgefield	1	2	7	1	3	6	1	2	0	3	2	2	30
Rocky Hill	0	2	0	0	3	1	0	1	1	2	0	0	10
Roxbury	0	0	3	0	2	0	0	1	0	0	0	0	6
Salem	0	0	0	0	0	0	0	0	0	0	0	0	0
Salisbury	0	0	0	0	1	0	1	2	0	2	2	3	11
Scotland	0	0	0	0	0	0	1	0	0	1	1	0	3
Seymour	15	19	10	6	6	10	8	9	7	5	8	8	111
Sharon	0	4	11	0	0	0	0	0	0	0	0	0	15
Shelton	0	1	3	3	0	2	4	4	2	2	1	3	25
Sherman	0	0	0	0	0	0	2	0	0	0	0	0	2
Simsbury	0	2	2	2	0	0	0	0	0	0	0	0	6
Somers	2	1	1	0	1	0	1	0	0	0	0	1	7

Municipality	Month												YE Totals
	Jan	Feb	Mar	April	May	June	July	Aug	Sept	Oct	Nov	Dec	
South Windsor	0	0	0	0	0	0	0	0	0	0	0	0	0
Southbury	0	1	1	2	0	1	4	2	1	1	3	1	17
Southington	0	0	0	0	0	0	0	0	0	0	0	0	0
Sprague	2	1	9	0	1	1	1	4	0	2	2	1	24
Stafford	0	0	0	1	0	0	1	1	0	1	1	0	5
Stamford	0	0	0	0	0	0	0	0	0	0	0	0	0
Sterling	0	2	4	1	0	0	2	6	3	1	0	1	20
Stonington	0	0	0	0	0	0	0	0	0	0	0	0	0
Stratford	0	0	0	0	0	0	0	0	0	0	0	0	0
Suffield	2	1	2	1	1	1	1	2	0	1	0	1	13
Thomaston	0	0	1	1	0	1	0	1	2	0	1	0	7
Thompson	0	0	0	0	0	0	0	0	0	0	0	0	0
Tolland	5	2	13	1	0	0	0	0	0	0	0	0	21
Torrington	13	7	20	10	3	0	0	0	0	0	0	0	53
Trumbull	1	0	1	3	0	0	0	0	1	0	2	0	8
Union	0	0	0	0	0	0	0	0	0	0	0	0	0
Vernon	5	4	8	5	3	3	5	7	2	3	3	7	55
Voluntown	2	2	1	1	2	1	0	0	0	0	0	0	9
Wallingford	2	2	11	4	1	0	5	1	1	3	3	2	35
Warren	0	0	0	0	0	0	1	2	0	1	0	0	4
Washington	0	1	3	0	4	2	0	1	1	0	0	1	13
Waterbury	25	15	67	27	13	33	28	46	10	23	25	28	340
Waterford	0	0	2	2	0	1	0	2	0	2	0	0	9
Watertown	2	1	0	1	1	1	1	0	1	2	3	0	13
West Hartford	0	0	0	0	0	0	0	0	0	0	0	0	0
West Haven	10	14	25	13	9	12	7	14	7	9	11	6	137
Westbrook	0	0	0	0	0	0	0	0	0	0	0	0	0
Weston	1	1	5	0	2	2	0	1	0	1	1	0	14
Westport	0	0	0	0	0	0	0	0	0	0	0	0	0
Wethersfield	5	3	10	3	7	0	0	0	0	0	1	0	29
Willington	0	2	2	0	0	0	0	0	0	0	0	0	4
Wilton	0	0	0	1	0	0	0	0	0	0	0	0	1
Winchester	0	0	0	0	0	0	0	0	0	0	0	0	0
Windham	0	1	5	1	2	0	1	2	0	2	1	0	15
Windsor	10	8	19	7	10	9	7	14	10	3	9	5	111
Windsor Locks	0	1	1	3	1	1	1	1	0	0	1	0	10
Wolcott	0	0	0	0	0	0	0	0	0	0	0	0	0
Woodbridge	0	1	2	0	0	0	0	0	0	4	2	0	9
Woodbury	1	0	0	1	0	0	2	1	0	0	0	0	5
Woodstock	1	6	6	1	0	2	5	5	1	0	3	3	33
<b>Monthly Totals</b>	<b>346</b>	<b>436</b>	<b>810</b>	<b>384</b>	<b>306</b>	<b>292</b>	<b>361</b>	<b>322</b>	<b>157</b>	<b>205</b>	<b>269</b>	<b>184</b>	<b>4,072</b>

County	Month												YE Totals
	Jan	Feb	Mar	April	May	June	July	Aug	Sept	Oct	Nov	Dec	
<b>Fairfield</b>	39	51	157	65	32	56	69	91	31	50	64	52	<b>757</b>
<b>Hartford</b>	80	101	212	89	60	71	165	73	29	32	56	35	<b>1,003</b>
<b>Litchfield</b>	24	26	42	25	22	19	11	9	7	18	16	6	<b>225</b>
<b>Middlesex</b>	5	6	13	1	10	4	10	7	3	3	5	5	<b>72</b>
<b>New Haven</b>	142	183	263	141	117	94	74	96	53	65	86	63	<b>1,377</b>
<b>New London</b>	22	36	59	30	22	20	16	23	8	17	16	10	<b>279</b>
<b>Tolland</b>	10	14	23	13	19	15	8	9	6	7	12	7	<b>143</b>
<b>Windham</b>	24	19	41	20	24	13	8	14	20	13	14	6	<b>216</b>
<b>County totals</b>	<b>346</b>	<b>436</b>	<b>810</b>	<b>384</b>	<b>306</b>	<b>292</b>	<b>361</b>	<b>322</b>	<b>157</b>	<b>205</b>	<b>269</b>	<b>184</b>	<b>4,072</b>

