

**Questions and Answers**  
**Request for Quotes for Consultant to Perform**  
**Capital Needs Assessment and Develop**  
**Capital Improvement Plan**

**Pursuant to the Request for Quotes for a Consultant to Perform a Capital Needs Assessment and Develop a Capital Improvement Plan published on February 17, 2023, the following are questions and answers:**

Question: What is the size of the facility and when was it constructed?

*Answer: The total gross building area is 48,566, and the building was constructed in 1984.*

---

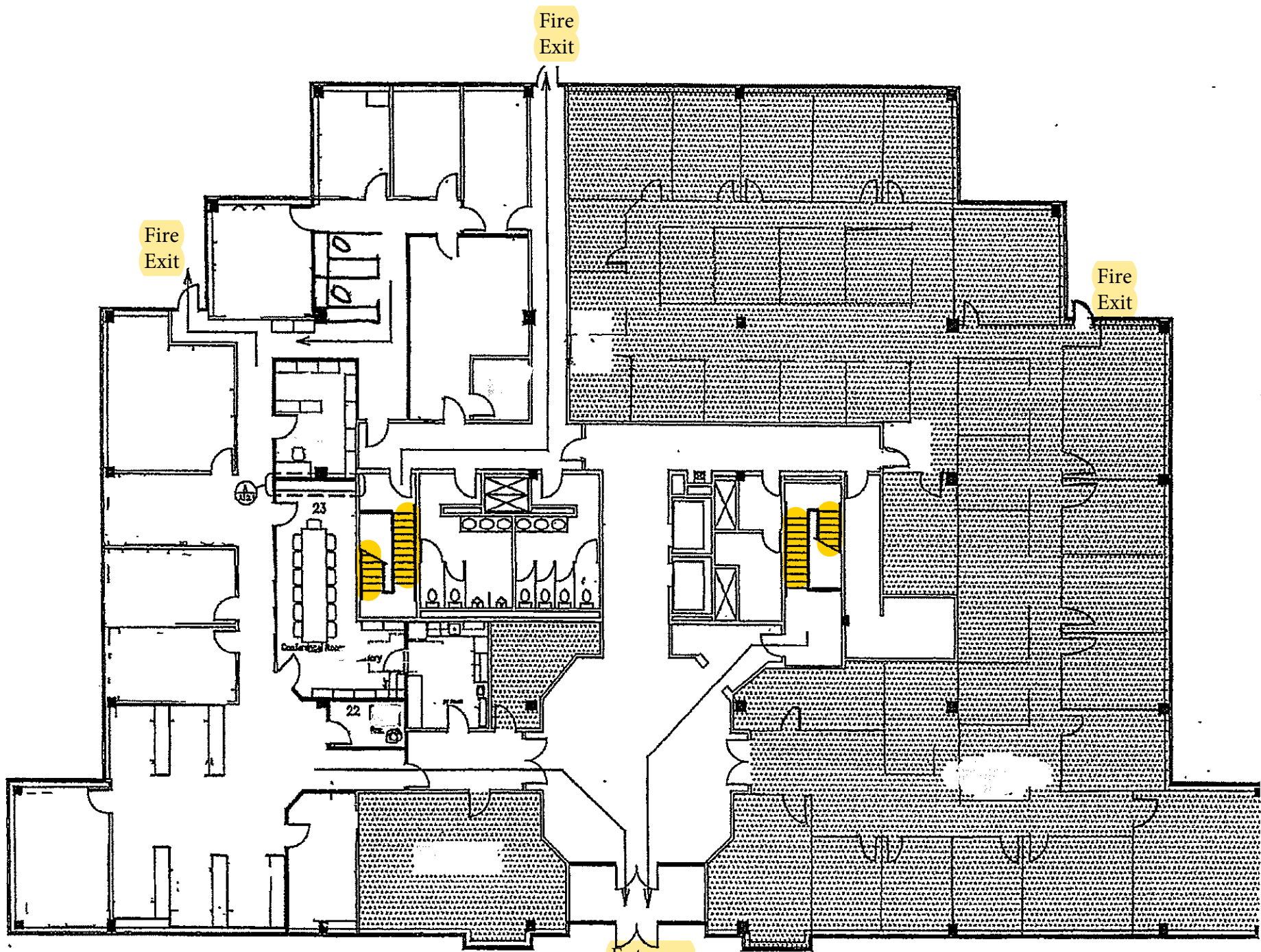
Question: Given that the HVAC system replacement project is underway, please confirm whether or not the assessment of the HVAC system is to be included in the Scope of Work?

*Answer: Please consider the HVAC system in the assessment.*

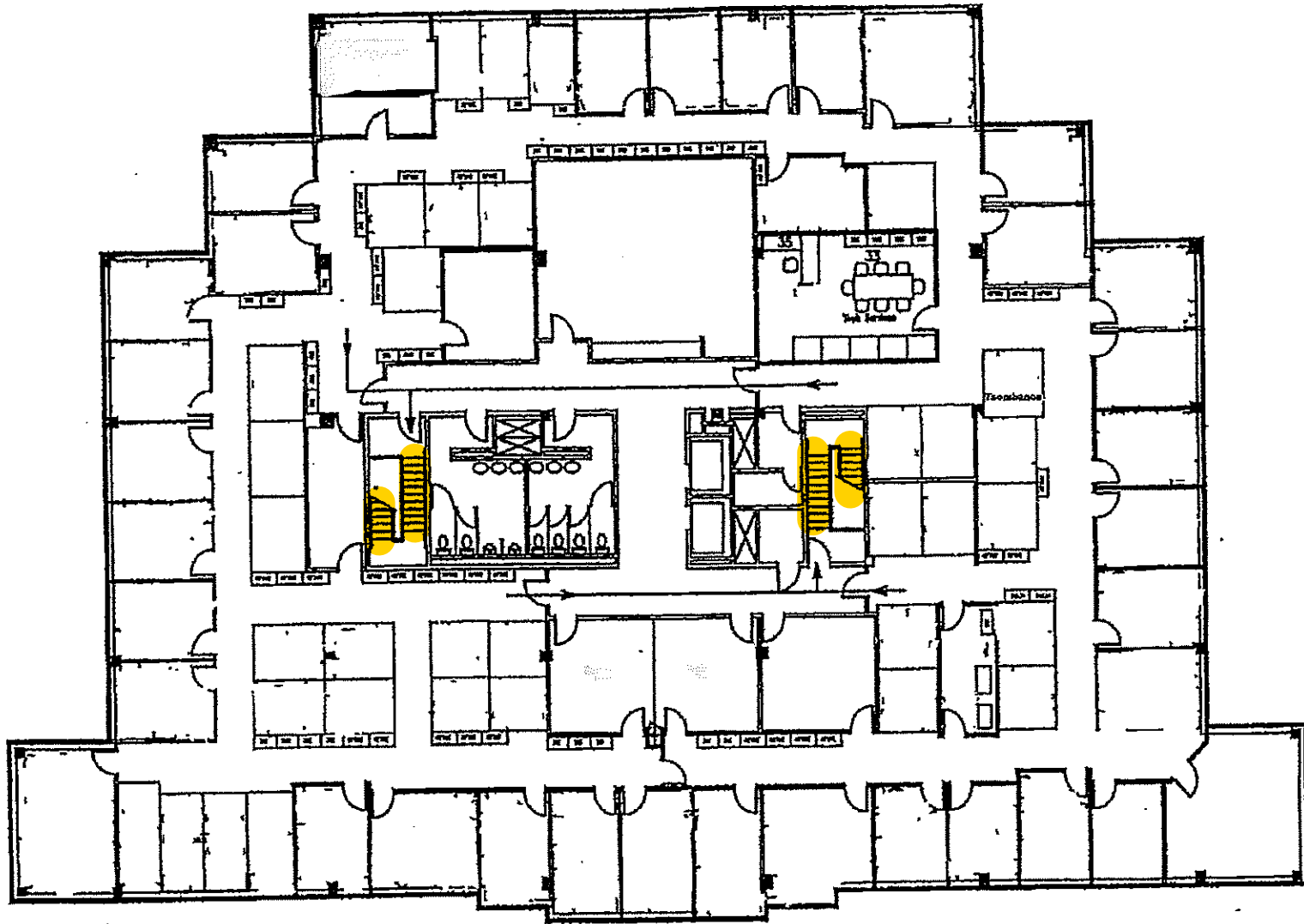
---

Question: Can you provide basic egress floor plans?

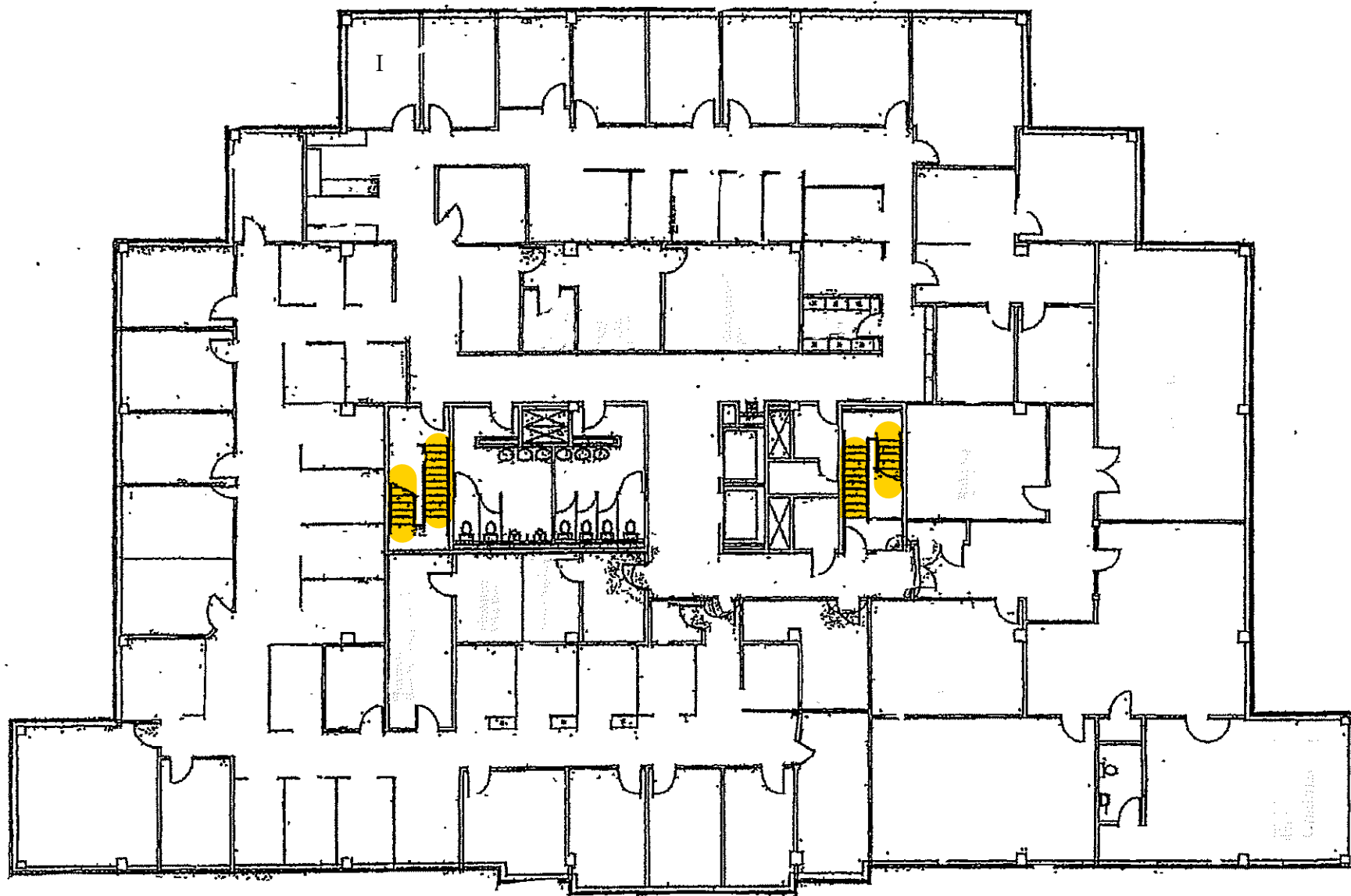
*Answer: Please see the attached.*



First Floor



Second Floor



Third Floor